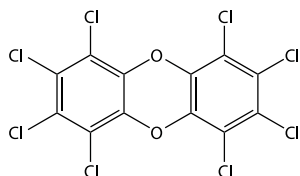


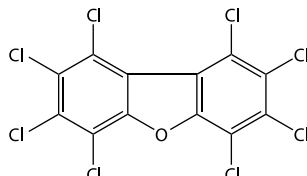


SERVICES SUMMARY DIOXIN/PCB WIPE SAMPLING

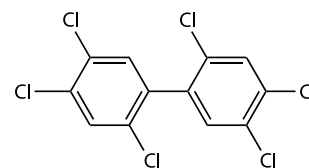
COLLECTION OF WIPE SAMPLES FOR THE DETERMINATION OF POLYCHLORINATED DIBENZO-P-DIOXINS, DIBENZOFURANS, AND PCB CONGENERS



Polychlorinated Dibenzop-Dioxin



Polychlorinated Dibenzofuran



Polychlorinated Biphenyl

APPLICATION OVERVIEW

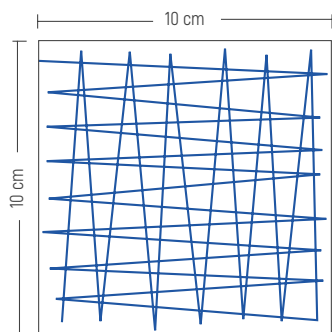
Wipe sampling is an important technique for the estimation of contaminant deposition in buildings, homes, or outdoor surfaces as a source of possible human exposure. Wipe sampling can help determine the disposal process of waste materials, and are frequently required after fires involving hazardous materials. The size of the surface to be tested along with the analytical method can be adapted to meet the action limits of the project.

DETECTION/REPORTING LIMITS

Several analytical approaches can be taken, depending upon the specific compound(s) of interest and the detection limit requirements. For a complete list of reportable analytes and current limits, please contact Pace® Analytical. The following table summarizes reporting limits based on the application of these options:

Homologue Group	1613B/8290A		8280M		1668A - Congeners
Wipe Area (detection units)	1 m2 (ng/m2)	100 cm2 (ng/m2)	1m2 (ng/m2)	100 cm2 (ng/m2)	ng/Sample
Mono-					0.25
Di-, Tri-					0.25-1.9
Tetra-	0.01	1	10	1000	0.5-1.23
Penta-, Hepta-, Hexa-	0.05	5	25	2500	0.5-1.0
Octa-	0.1	10	50	5000	0.75
Nona-, Deca-					0.75

8082 - Aroclors		
Total µg	MDL (All Aroclors)	PRL (All Aroclors)
	<0.22	1



SAMPLING GUIDELINE

- Mark off a 100 cm-Mark off a 100 cm2 area (or 1 m2) of the surface to be tested.
- Use lab grade, hexane wipe to swab the surface in one direction, then in the perpendicular direction.
- Transfer wipe into the original amber glass jar and secure the cap.
- Ship samples to the laboratory via overnight carrier, chilled to 6°C (42°F).
- To prevent cross contamination, sterile tongs are recommended when handling wipes for sampling area (or 1 m2) of the surface to be tested.

Pace® will provide appropriate wipe sample kits and 100 cm2 templates upon request.

*Pace® Analytical recommends using proper PPE and following site specific safety requirements. Trained personnel should perform sampling operations.